

Your interactive DB pension plan dashboard

Sharpen your analysis



Transparency despite complexity in global risk management

As the global pension market becomes increasingly complex, plan sponsors and trustees need quick and easy access to vital information to help them carry out their responsibilities. To help you understand your global pension position and how it may impact your business, you need to see a range of bespoke data. Mercer's Defined Benefit (DB) Dashboard provides precisely that. The curated, aggregated platform allows stakeholders to monitor global funding levels and accounting positions and gauge the impact of interest rates and market movements.

The platform displays annual contribution commitments and helps plan sponsors and trustees manage risk at a global and local level.

Benefits for plan sponsors and trustees

- Get insight and analysis at your fingertips
- Access online 24/7
- See global and country-level views
- Model impact of market movements
- View trends over time



The DB Dashboard offers a customizable, user-friendly overview of key plan statistics. This is an invaluable tool for plan sponsors that are keen to understand the financial impact of different scenarios to their plans.

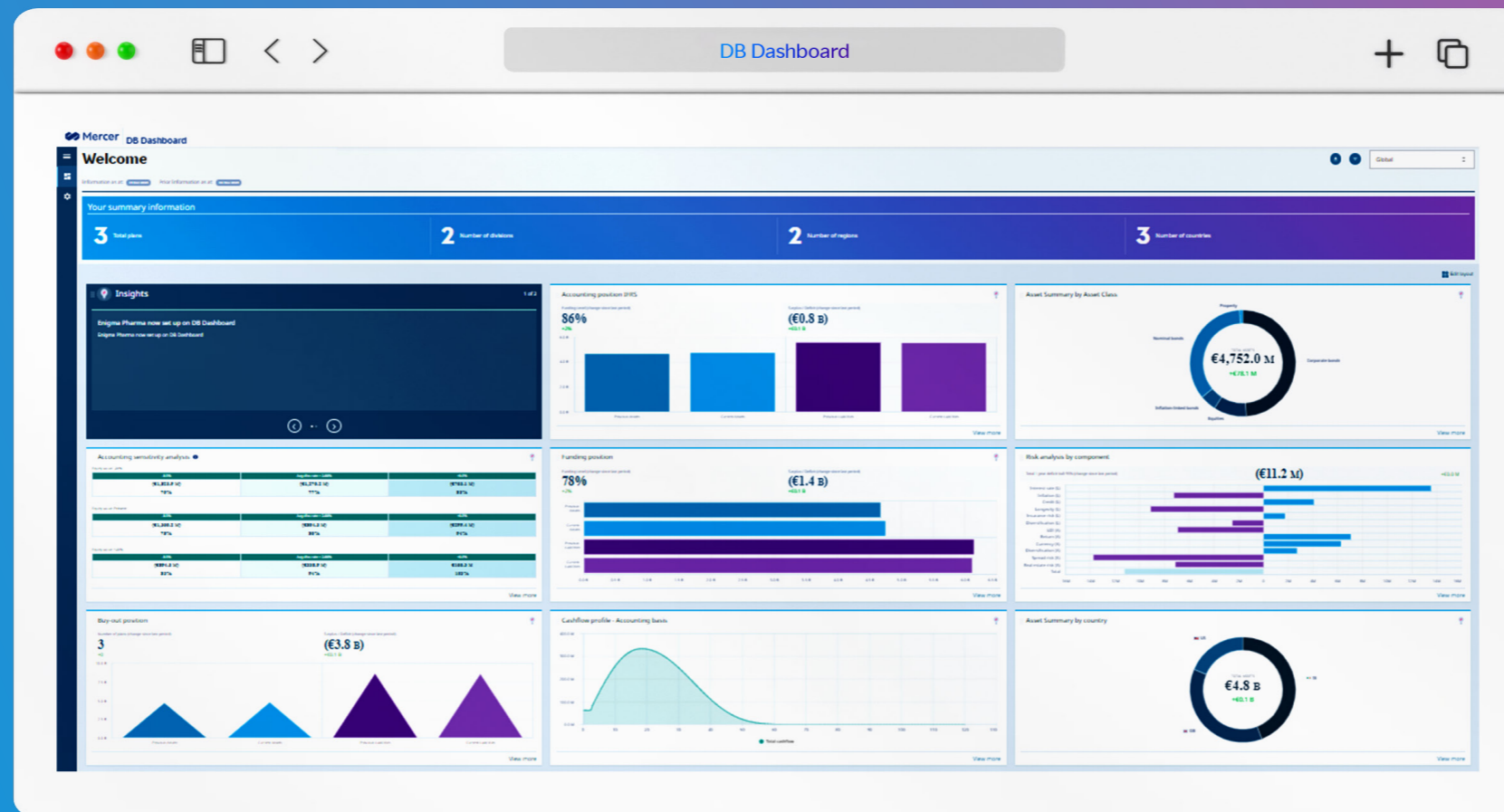
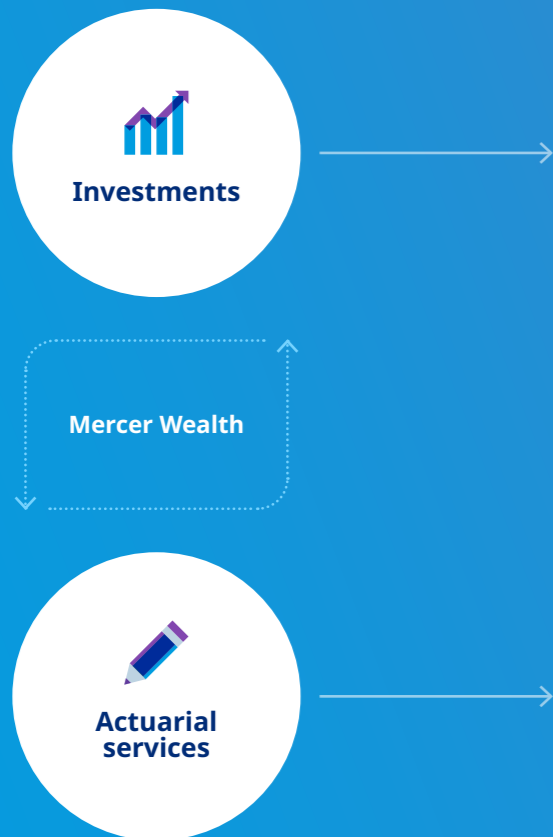


Interactive monitoring of global and local pension plans

With the DB Dashboard, all your pension assets and liability information is available at your fingertips — presented holistically, clearly and concisely. The Dashboard ensures you always have a comprehensive overview of the assets and cash flows of your company pension plans. Real-time calculations and recording of all assets and liabilities across regions also ensures efficient governance.



The DB Dashboard — Our holistic approach



DB Dashboard

Combining both assets and liabilities provides a stronger overview.

Mercer's DB Dashboard overview

Efficient evaluations and analysis of the impact of changes on the interest rate, price inflation and benefit increases — prepared and presented in a simple, easy-to-use format — are core components of the DB Dashboard. With the Dashboard, you have the information you need to speak with confidence about current pension positions.

In meetings, you can access the DB Dashboard on your mobile device. Or use the Dashboard for detailed analyses as part of ongoing monitoring.



News

Stay up to date with personalized messages.



Information about sensitivities

See the influence stock markets and interest-rate changes have.



Key balance sheet figures

Directly compare key figures on plan assets and obligation value as well as profit-and-loss information under different accounting standards.



Ongoing risk monitoring

Future-oriented data enables you to monitor risks on an ongoing basis. Find out which risk drivers to consider and how they develop over time.



Information on plan assets

Analyze the composition of your plan assets.



Cash flow forecast

Plan and manage with the support of cash flow forecasting.



Funding position

Find information about your plan's assets and liabilities across different funding measures, at a reference date.

Mercer's DB Dashboard — Additional features



Compare reporting periods

For better analysis, the Dashboard provides flexibility in setting viewing periods.



Filter and summarize results

Results can be filtered or summarized by country, region or business unit.



M&A transparency

Extensive filter functions provide transparency on the composition of different business areas.



View more (including information at the plan level)

A "View more" button links to deeper analysis.



Compare multiple funding positions

Compare different funding measures against plan assets at a point in time.



Country preferences

Highlight key countries by selecting the display order of countries on the Dashboard.

The DB Dashboard provides you with an overview of your global pension plans, enabling you to aggregate or filter results at different reporting levels at the push of a button.

This provides you with relevant data at a glance, whether at the global, regional, national or plan level. You can also aggregate plans across multiple companies.



What-if analysis

Estimate the impact of interest- and inflation-rate changes or other factors on balance sheet positions.

The screenshot shows a 'What-if analysis' window with the following sliders and values:

- Discount rate (p.a.): 1.4%
- Inflation rate (p.a.): 1.49%
- Pension indexation (p.a.): 1.25%
- Salary increases (p.a.): 2.47%
- Cash balance credit rate (p.a.): 0%
- Equity value (p.a.): 0%

Buttons for 'Cancel' and 'Calculate' are visible at the bottom right of the window.

Important notices

References to Mercer shall be construed to include Mercer (US) LLC and/or its associated companies.

© 2024 Mercer (US) LLC. All rights reserved.

This content may not be modified, sold or otherwise provided, in whole or in part, to any other person or entity without Mercer's prior written permission.

Mercer does not provide tax or legal advice. You should contact your tax advisor, accountant and/or attorney before making any decisions with tax or legal implications.

This does not constitute an offer to purchase or sell any securities.

The findings, ratings and/or opinions expressed herein are the intellectual property of Mercer and are subject to change without notice. They are not intended to convey any guarantees as to the future performance of the investment products, asset classes or capital markets discussed.

For Mercer's conflict of interest disclosures, contact your Mercer representative or see mercer.com/footer/conflicts-of-interest-mercer-investments.

This does not contain investment advice relating to your particular circumstances. No investment decision should be made based on this information without first obtaining appropriate professional advice and considering your circumstances. Mercer provides recommendations based on the particular client's circumstances, investment objectives and needs. As such, investment results will vary and actual results may differ materially.

Past performance is no guarantee of future results. The value of investments can go down as well as up, and you may not get back the amount you have invested. Investments denominated in a foreign currency will fluctuate with the value of the currency. Certain investments, such as securities issued by small capitalization, foreign and emerging market issuers, real property, and illiquid, leveraged or high-yield funds, carry additional risks that should be considered before choosing an investment manager or making an investment decision.

Information contained herein may have been obtained from a range of third party sources. While the information is believed to be reliable, Mercer has not sought to verify it independently. As such, Mercer makes no representations or warranties as to the accuracy of the information presented and takes no responsibility or liability (including for indirect, consequential, or incidental damages) for any error, omission or inaccuracy in the data supplied by any third party.

For the most recent approved ratings of an investment strategy, and a fuller explanation of their meanings, contact your Mercer representative.

Mercer universes: Mercer's universes are intended to provide collective samples of strategies that best allow for robust peer group comparisons over a chosen timeframe. Mercer does not assert that the peer groups are wholly representative of and applicable to all strategies available to investors.

Please see the following link for information on investment management index definitions.

Not all services mentioned are available in all jurisdictions. Please contact your Mercer representative for more information.

Investment management and advisory services for U.S. clients are provided by Mercer Investments LLC (Mercer Investments). Mercer Investments LLC is registered to do business as "Mercer Investment Advisers LLC" in the following states: Arizona, California, Florida, Illinois, Kentucky, New Jersey, North Carolina, Oklahoma, Pennsylvania, Texas, and West Virginia; as "Mercer Investments LLC (Delaware)" in Georgia; as "Mercer Investments LLC of Delaware" in Louisiana; and "Mercer Investments LLC, a limited liability company of Delaware" in Oregon. Mercer Investments LLC is a federally registered investment adviser under the Investment Advisers Act of 1940, as amended. Registration as an investment adviser does not imply a certain level of skill or training. The oral and written communications of an adviser provide you with information about which you determine to hire or retain an adviser. Mercer Investments' Form ADV Part 2A & 2B can be obtained by written request directed to: Compliance Department, Mercer Investments 99 High Street, Boston, MA 02110.

Certain regulated services in Europe are provided by Mercer Global Investments Europe Limited and Mercer Limited.

Mercer Global Investments Europe Limited is regulated by the Central Bank of Ireland under the European Union (Markets in Financial Instruments) Regulation 2017, as an investment firm. Registered office: Charlotte House, Charlemont Street, Dublin 2, Ireland. Registered in Ireland No. 416688. Mercer Limited is authorized and regulated by the Financial Conduct Authority. Registered in England and Wales No. 984275. Registered Office: 1 Tower Place West, Tower Place, London EC3R 5BU.

Investment management services for Canadian investors are provided by Mercer Global Investments Canada Limited. Investment consulting services for Canadian investors are provided by Mercer (Canada) Limited.

Investment advisory services for Brazil clients are provided by Mercer Human do Brasil (Mercer Brazil), a company regulated by the Brazilian Securities and Exchange Commission to provide Financial Advisory services. This does not constitute an offer or a solicitation of an offer to buy or sell securities, commodities and/or any other financial instruments or products or constitute a solicitation on behalf of any of the investment managers, or their affiliates. For the avoidance of doubt, this is not formal investment advice to allow any party to transact. Additional advice will be required in advance of entering into any contract. The findings, ratings and/or opinions expressed herein are the intellectual property of Mercer and are subject to change without notice. They are not intended to convey any guarantees as to the future performance of the investment products, asset classes or capital markets discussed. Past performance does not guarantee future results. The services mentioned in this document refer to global investment services and some of them may not be provided locally by Mercer Brazil; please contact our local team for information.

The services mentioned in this document refer to global investment services and some of them may not be provided locally by Mercer Mexico; please contact our local team for information.