

Your interactive DB pension plan dashboard

Sharpen your analysis



Transparency despite complexity in global risk management

As the global pension market becomes increasingly complex, plan sponsors and trustees need quick and easy access to vital information to help them carry out their responsibilities. To help you understand your global pension position and how it may impact your business, you need to see a range of bespoke data. Mercer's Defined Benefit (DB) Dashboard provides precisely that. The curated, aggregated platform allows stakeholders to monitor global funding levels and accounting positions and gauge the impact of interest rates and market movements.

The platform displays annual contribution commitments and helps plan sponsors and trustees manage risk at a global and local level.

Benefits for plan sponsors and trustees

- Get insight and analysis at your fingertips
- Access online 24/7
- See global and country-level views
- Model impact of market movements
- View trends over time



The DB Dashboard offers a customizable, user-friendly overview of key plan statistics. This is an invaluable tool for plan sponsors that are keen to understand the financial impact of different scenarios to their plans.

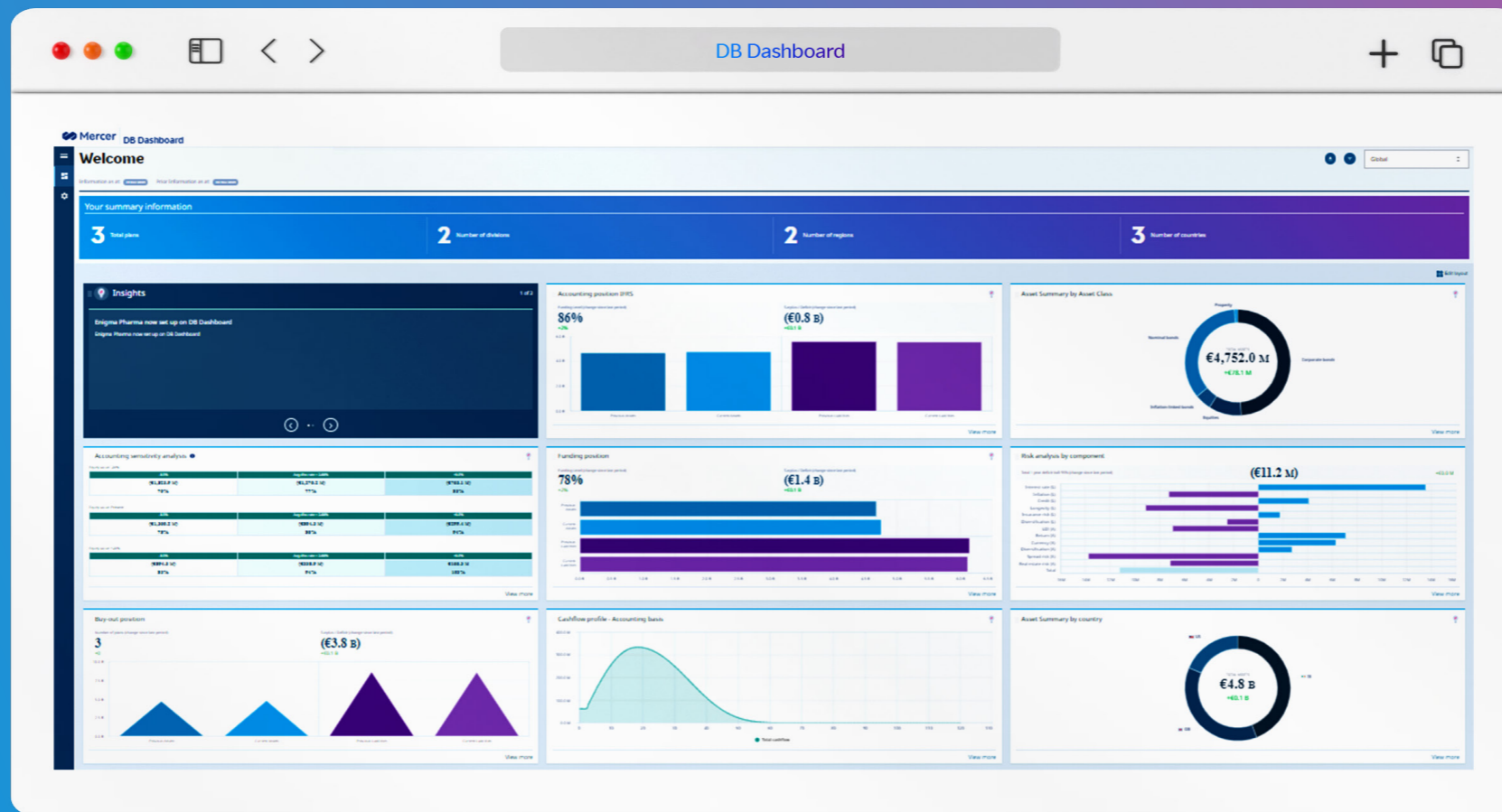
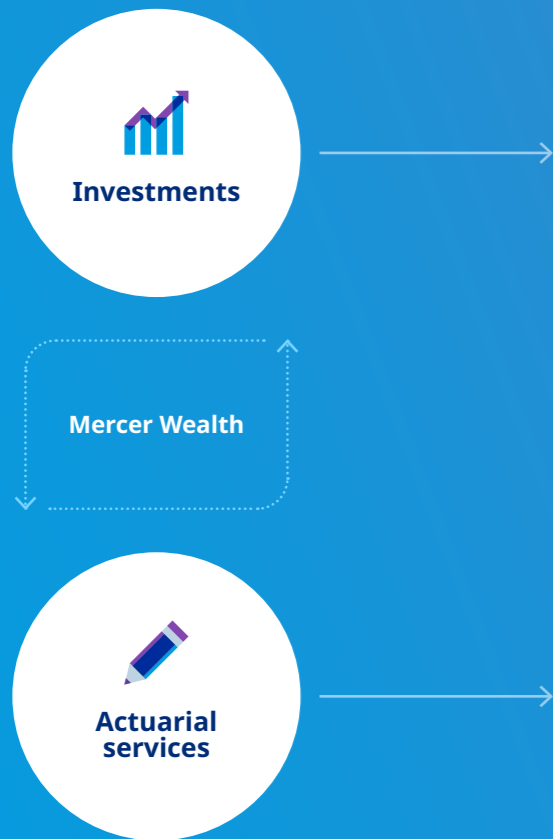


Interactive monitoring of global and local pension plans

With the DB Dashboard, all your pension assets and liability information is available at your fingertips — presented holistically, clearly and concisely. The Dashboard ensures you always have a comprehensive overview of the assets and cash flows of your company pension plans. Real-time calculations and recording of all assets and liabilities across regions also ensures efficient governance.



The DB Dashboard — Our holistic approach



DB Dashboard
Combining both assets and liabilities provides a stronger overview.

Mercer's DB Dashboard overview

Efficient evaluations and analysis of the impact of changes on the interest rate, price inflation and benefit increases — prepared and presented in a simple, easy-to-use format — are core components of the DB Dashboard. With the Dashboard, you have the information you need to speak with confidence about current pension positions.

In meetings, you can access the DB Dashboard on your mobile device. Or use the Dashboard for detailed analyses as part of ongoing monitoring.



News

Stay up to date with personalized messages.



Information about sensitivities

See the influence stock markets and interest-rate changes have.



Key balance sheet figures

Directly compare key figures on plan assets and obligation value as well as profit-and-loss information under different accounting standards.



Ongoing risk monitoring

Future-oriented data enables you to monitor risks on an ongoing basis. Find out which risk drivers to consider and how they develop over time.



Information on plan assets

Analyze the composition of your plan assets.



Cash flow forecast

Plan and manage with the support of cash flow forecasting.



Funding position

Find information about your plan's assets and liabilities across different funding measures, at a reference date.

Mercer's DB Dashboard — Additional features



Compare reporting periods

For better analysis, the Dashboard provides flexibility in setting viewing periods.



Filter and summarize results

Results can be filtered or summarized by country, region or business unit.



M&A transparency

Extensive filter functions provide transparency on the composition of different business areas.



View more (including information at the plan level)

A "View more" button links to deeper analysis.



Compare multiple funding positions

Compare different funding measures against plan assets at a point in time.



Country preferences

Highlight key countries by selecting the display order of countries on the Dashboard.

The DB Dashboard provides you with an overview of your global pension plans, enabling you to aggregate or filter results at different reporting levels at the push of a button.

This provides you with relevant data at a glance, whether at the global, regional, national or plan level. You can also aggregate plans across multiple companies.



What-if analysis

Estimate the impact of interest- and inflation-rate changes or other factors on balance sheet positions.

The screenshot shows a 'What-if analysis' window with the following sliders and values:

Assumption	Current Value	Range
Discount rate (p.a.)	1.4	-1.6% to 4.4%
Inflation rate (p.a.)	1.49	-1.51% to 4.49%
Pension indexation (p.a.)	1.25	-1.75% to 4.25%
Salary increases (p.a.)	2.47	-0.53% to 5.47%
Cash balance credit rate (p.a.)	0	-3% to 3%
Equity value (p.a.)	0	-50% to 50%

Buttons: Return slider to base position, Cancel, Calculate

Important notices

References to Mercer shall be construed to include Mercer LLC and/or its associated companies.

This contains confidential and proprietary information of Mercer and is intended for the exclusive use of the parties to whom it was provided by Mercer. Its content may not be modified, sold or otherwise provided, in whole or in part, to any other person or entity, without Mercer's prior written permission.

The findings, ratings, and/or opinions expressed herein are the intellectual property of Mercer and are subject to change without notice. They are not intended to convey any guarantees as to the future performance of the investment products, asset classes or capital markets discussed. Past performance does not guarantee future results. Mercer's ratings do not constitute individualized investment advice.

Information contained herein has been obtained from a range of third-party sources. Although the information is believed to be reliable, Mercer has not sought to verify it independently. As such, Mercer makes no representations or warranties as to the accuracy of the information presented and takes no responsibility or liability (including for indirect, consequential or incidental damages), for any error, omission or inaccuracy in the data supplied by any third party.

This does not contain regulated investment advice in respect of actions you should take. No investment decision should be made based on this information without obtaining prior specific, professional advice relating to your own circumstances.

This does not constitute an offer or a solicitation of an offer to buy or sell securities, commodities and/or any other financial instruments or products or constitute a solicitation on behalf of any of the investment managers, their affiliates, products or strategies that Mercer may evaluate or recommend.

For the most recent approved ratings of an investment strategy, and a fuller explanation of their meanings, contact your Mercer representative. For Mercer's conflict of interest disclosures, contact your Mercer representative or see www.mercer.com/conflictsofinterest.

Mercer's universes are intended to provide collective samples of strategies that best allow for robust peer comparisons over a chosen time frame. Mercer does not assert that the peer groups are wholly representative of and applicable to all strategies available to investors.